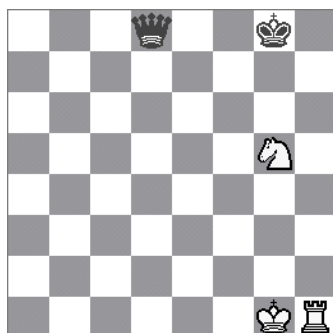
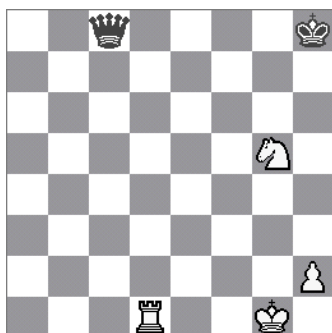
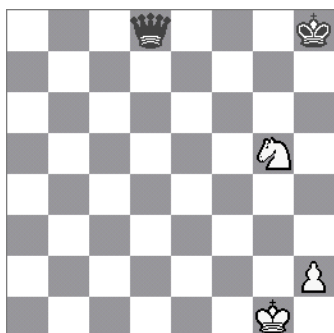


SÍLA JEZDCE

ING.Vratislav HORA

Hlavní možností jezdcem je (díky jeho specifickému chodu) možnost dát dvojí úder – vidličku.

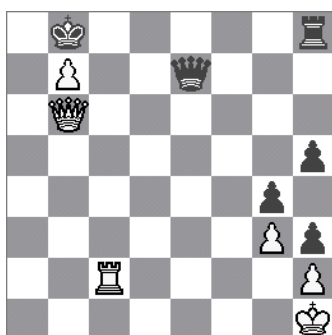
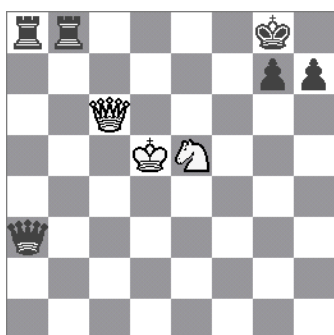


1.Jf7+ Kg7 2.Jxd8 +-

1.Vd8 (zavlečení dámy) 1...Dxd8
2.Jf7+ +-

1.Vh8+ Kxh8 2.Jf7+ a remíza

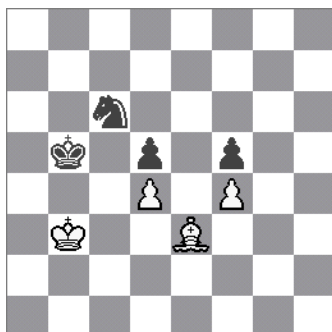
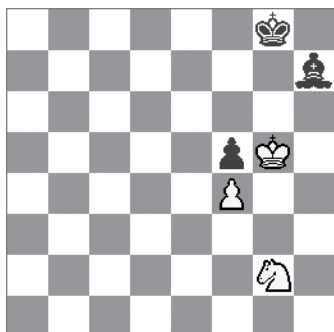
Nesmíme zapomenout ani na možnost dušeného matu a kombinační možnost při proměně pěšce.



1.De6 Kh8 2. Jf7 Kg8 3.Jh6 Kh8 4.Dg8! Vxg8 5.Jf7mat_(Lucena 1497)

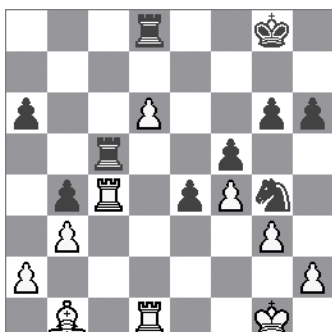
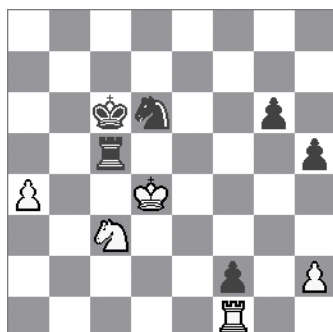
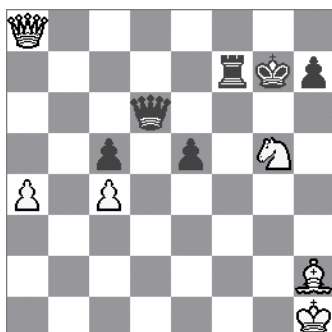
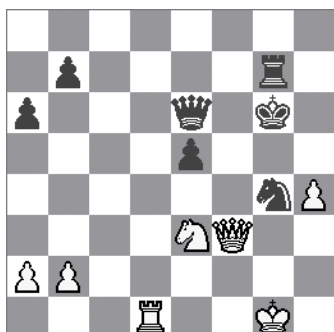
1.Vc8! Vxc8 2.Da7! Kxa7 3.bxc8J! Kb7 4.Jxe7 (Lasker)

V koncovce vynikne jeho přednost zejména při boji na malém prostoru:



1.Kh6 Kh8 2.Jh4 Kg8 3.Jf3 Kh8 4.Je5 Kg8 5.Jc6! Kh8 6.Je7 Sg8 7.Jg6 mat

1...Ja5+ 2.Kc3 Ka4! 3.Sf2 Jc6 4.Se3 Ja7 5.Sf2 Jb5+ 6.Kd3 Kb3 7.Se3 Jc3 8.Sf2 Ja2 9.Se3 Jb4+ 10.Kd2 Kc4-+



1.Vd6 Dxd6 2.Dxg4+ Kf7 3.Dxg7+ Kxg7 4.Jf5+-

1.Sxe5+ Dxe5 2.Dh8+ Kxh8 3.Jxf7+-

1...Jf5+ 2.Kd3 Vxc3+ 3.Kxc3 Je3 4.Vxf2 Jd1+-+

1...Je3! 2.Vxc5 Jxd1 3.Vc4 [3.Vd5? Jc3-+; 3.Vc6 Jc3 4.Sc2 Je2+ 5.Kf2 Jd4 6.Vc4 Vxd6 -/+]
3...Vxd6! 4.Vxb4 Jc3 5.Sc2 Vd2-+

Partiové ukázky:

1.d4 Jf6 2.Sg5 c5 3.dxc5 e6 4.Jc3 Sxc5 5.Je4? Jxe4!+- Orgoň-Hausner, Staré Město 2004

1.e4 e5 2.Jf3 d6 3.Sc4 Sg4 4.Jc3 h6? 5.Jxe5!! Sxd1 6.Sxf7+ Ke7 7.Jd5# Legal

1.e4 e5 2.Jf3 Jc6 3.d4 exd4 4.Sc4 d6 5.c3 dxc3 6.Jxc3 Sg4 7.0-0 Je5? 8.Jxe5 Sxd1 9.Sxf7+ Ke7 10.Jd5#

1.e4 e5 2.Jf3 Jc6 3.Sc4 Sc5 4.b4 Sxb4 5.c3 Sa5 6.d4! exd4 7.0-0 Jf6 8.Sa3 d6 9.e5! dxe5 10.Db3 Dd7 11.Ve1 e4 12.Jbd2 Sxc3 13.Jxe4 Sxe1 14.Vxe1 Kd8 15.Jeg5 Ja5 16.Je5! Jxb3 17.Jexf7+ Dxf7 18.Jxf7+ Kd7 19.Sb5+ c6 20.Ve7#

1.e4 e5 2.f4 Sc5 3.Jf3 d6 4.Jc3 Jf6 5.Sc4 Jc6 6.d3 Sg4 7.Ja4 exf4 8.Jxc5 dxc5 9.Sxf4 Jh5 10.Se3 Je5? 11.Jxe5! Sxd1 12.Sxf7+ Ke7 13.Sxc5+ Kf6 14.0-0+ Kxe5 15.Vf5# Alechin-Tenner, Karlovy Vary 1911

1.d4 Jf6 2.c4 e6 3.Jf3 b6 4.g3 Sb7 5.Sg2 Se7 6.Jc3 0-0 7.Dc2 c5 8.d5! exd5 9.Jg5 Jc6 10.Jxd5 g6 11.Dd2 Jxd5? 12.Sxd5 Vb8? 13.Jxh7! Korčňoj-Karpov, 1974

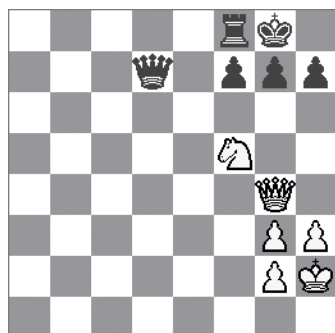
1.e4 e5 2.Jf3 Jc6 3.Sb5 a6 4.Sa4 Jf6 5.Jc3 Sb4?! 6.Jd5 Sa5 7.0-0 b5 8.Sb3 d6 9.d3 Sg4 10.c3 Je7 11.Jxe5! Sxd1 12.Jxf6+ gxf6 [12...Kf8 13.Jed7+ Dxd7 14.Jxd7+ Ke8 15.Vxd1 Kxd7 16.Sxf7+-] 13.Sxf7+ Kf8 14.Sh6# Tarrasch-Čigorin, 1893

1.e4 c5 2.Jc3 Jc6 3.Jge2 Jf6 4.g3 d5 5.exd5 Jd4 6.Sg2 Sg4 7.d3 Jxd5 8.Jxd5 Dxd5 9.Sxd5 Jf3+ 10.Kf1 Sh3#

1.e4 e5 2.Jf3 Jc6 3.Jc3 g6 4.d4 exd4 5.Jd5 Sg7 6.Sg5 Jge7 7.Jxd4! Sxd4 8.Dxd4! Jxd4 9.Jf6+ Kf8 10.Sh6#

1.d4 Jf6 2.c4 e6 3.Jf3 c5 4.Jc3 cxd4 5.Jxd4 Sb4 6.Dc2 Jc6 7.e3 0-0 8.Sd3 Je5 9.Se2 b6 10.0-0 Sb7 11.f3 Vc8 12.Da4 a5 13.Jcb5 d5 14.cxd5 Jxd5 15.a3 Vxc1!! 16.Vaxc1 Sd2 17.Vcd1 Sxe3+ 18.Kh1 Dh4 19.g3 Dh3 20.Jd6 Jg4! 21.fxg4 Dg2+ 22.Kxg2 Jf4# Landetty-Hracek, 2004

1.d4 d5 2.c4 e6 3.Jc3 Jf6 4.Sg5 Se7 5.e3 0-0 6.Jf3 Jbd7 7.Vc1 c6 8.Sd3 dxc4 9.Sxc4 Jd5 10.Sxe7 Dxe7 11.0-0 Jxc3 12.Vxc3 e5 13.Dc2 exd4 14.exd4 Jf6 15.Ve1 Dd6 16.Jg5 Sg4 17.Vg3 Sh5 18.Vh3 Sg6? 19.Dxg6!! hxg6 20.Sxf7+ Vxf7 21.Vh8+ Kxh8 22.Jxf7+-



Jezdec a dáma:

Možnosti jezdece ve spolupráci s dámou ukazuje vedlejší diagram, kde zároveň hrozí mat na g7 a odtažný šach. Jh6 se získá dáma – obě tyto hrozby nemůže černý (i když je na tahu) pokrýt. a proto prohraje.